

NNPB POST BAFFLES

DESIGN



techflame

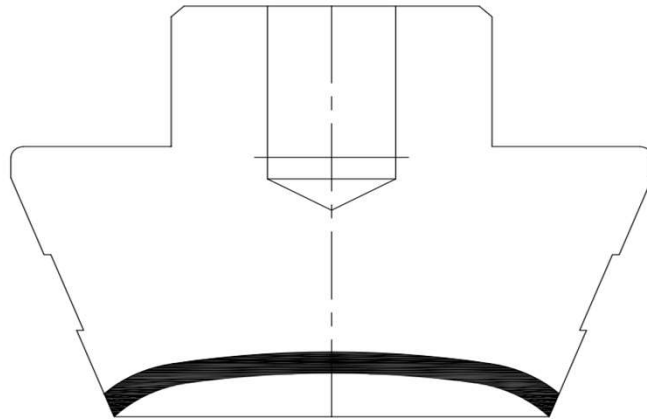
Developed by Glass People for Glass People

POST BAFFLE

Standard



techflame



Standard POST BAFFLE:

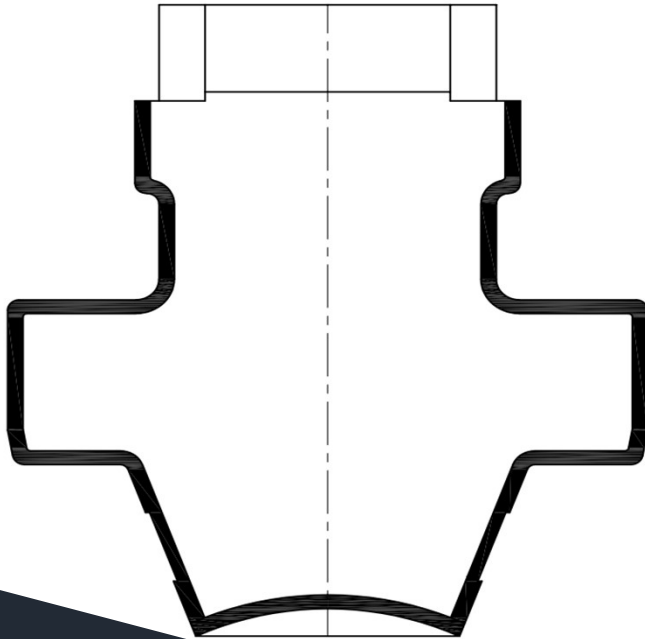
- Not stable results on Internal pressure test due to baffle marks
- Needed CNC machine for re-reworking after production
- Needed special gauges for controlling dimensions
- Sharp edges sensitive to mechanical wear and damages
- Expensive materials (dameron) for long life

POST BAFFLE

Improved



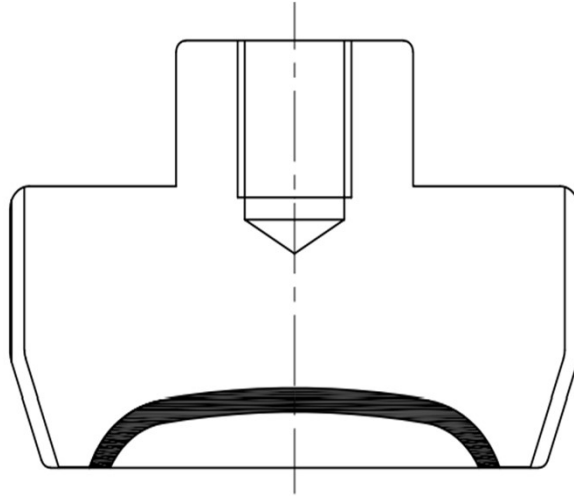
techflame



TechFlame Improved design : + 2% PTM

- High average results on pressure test
- No baffle marks
- Needed CNC machine for re-reworking after production
- Needed special gauges for controlling dimensions
- Sharp edges sensitive to mechanical wear and damage
- Expensive materials (dameron) for long life

TH POST BAFFLE



TechFlame design : + 2% PTM – Ultra low weight bottles

- No Baffle marks
- High average results on pressure test - over 22 bars
- Better glass distribution
- Ultra low weight jobs . Specific weight ratio 0.4 - 0.5 for beers and high-pressure bottles
- Practically maintenance-free



techflame

**YOUR PARTNER
IN
HOLLOW GLASS
INDUSTRY**

Contact us:

 **+359887787015**

 **office@techflame.org**

web: www.techflame.org